

Level 9 GMATA Theory Test 2024-2025

Student Name _____ Date _____

Teacher Name _____ Local Association _____

Aural

A. Name the interval you hear by number and quality (P, M, m, dim, aug)

- | | | | |
|----|-------|----|-------|
| 1. | _____ | 5. | _____ |
| 2. | _____ | 6. | _____ |
| 3. | _____ | 7. | _____ |
| 4. | _____ | 8. | _____ |

B. Circle the quality of the triad you hear

- | | | | | |
|----|-------|-------|------------|-----------|
| 1. | Major | Minor | Diminished | Augmented |
| 2. | Major | Minor | Diminished | Augmented |
| 3. | Major | Minor | Diminished | Augmented |

C. Circle the kind of scale you hear

- | | | | | |
|----|------------|------------|----------------|---------------|
| 1. | Whole Tone | Pentatonic | Harmonic Minor | Melodic Minor |
| 2. | Whole Tone | Pentatonic | Harmonic Minor | Melodic Minor |
| 3. | Whole Tone | Pentatonic | Harmonic Minor | Melodic Minor |

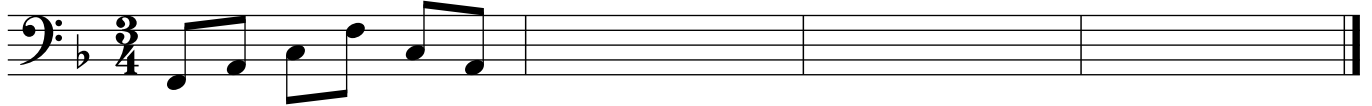
D. Circle the kind of cadence you hear

- | | | | | |
|----|-----------|------|--------|-----------|
| 1. | Authentic | Half | Plagal | Deceptive |
| 2. | Authentic | Half | Plagal | Deceptive |
| 3. | Authentic | Half | Plagal | Deceptive |

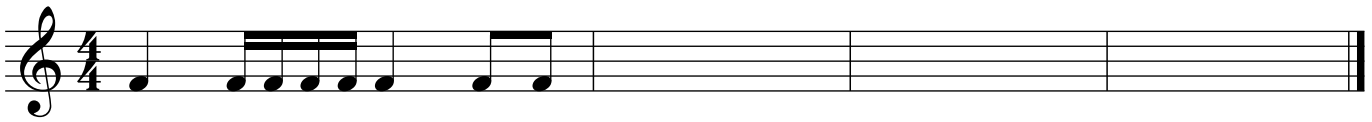
E. Circle the number of the rhythm you hear

1. 
2. 
3. 

F. Complete the melody you hear with the correct notes and rhythm. The first measure is done for you.

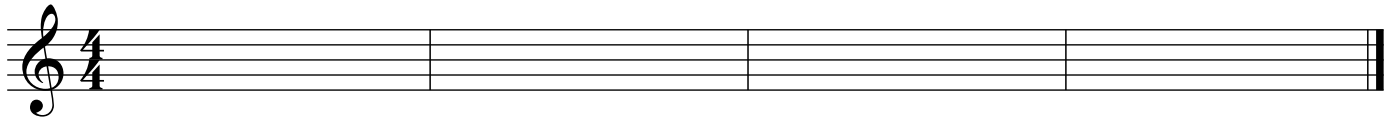


G. Complete the rhythm you hear. The first measure is done for you.



Written

1. Using half notes, draw the following cadences in the key of f# harmonic minor with accidentals



Authentic Cadence

Deceptive Cadence

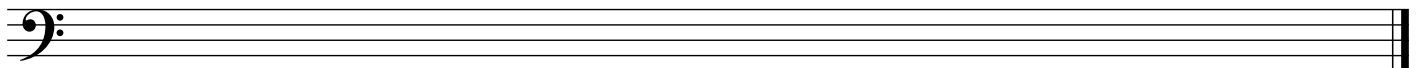
Plagal

Half

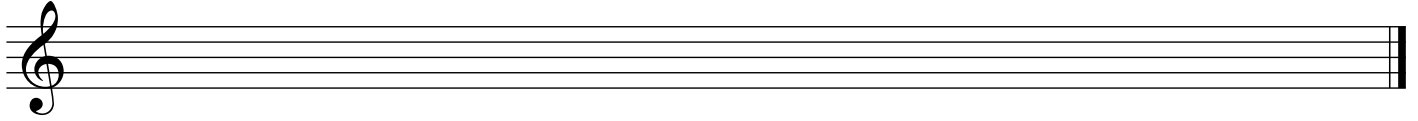
2. Draw the key signature of C#M on both the Treble and Bass clef staves



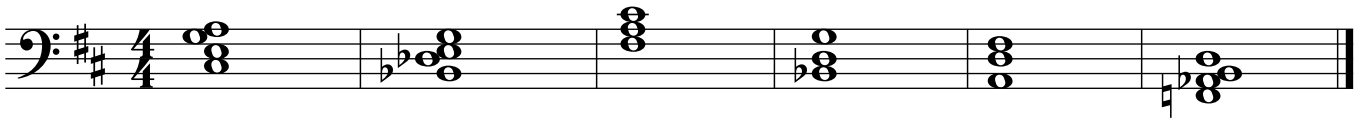
3. Draw the scale of c# harmonic minor, ascending only, using accidentals



4. Draw the scale of e melodic minor, ascending and descending, using accidentals



5. Label the following chords in the key of D using Roman Numerals and figured bass



6. Write the notes of the C# pentatonic scale

7. Write the notes of the E whole tone scale

8. Name the following intervals by number and quality (P, M, m, dim, aug).



9. Name the ornament

∞ _____

* _____

∞ _____

10. Match the terms on the left with the definitions on the right. Using Capital letters, put the letter next to the term on the line next to the definition.

- | | | |
|-------------------------|-------|--|
| A. <i>Bb</i> Instrument | _____ | Lightly |
| B. Pesante | _____ | A scale using only whole steps |
| C. Suspension | _____ | Suddenly |
| D. Fugue | _____ | An ordered set of pieces |
| E. Polyphonic | _____ | An instrument whose sounding pitch is one whole step lower than its notated pitch |
| F. Homophonic | _____ | With |
| G. Assai | _____ | An instrument whose sounding pitch is a perfect 5 th lower than the notated pitch |
| H. Leggiero | _____ | A scale on all black keys or the same intervallic pattern on any key |
| I. Whole Tone Scale | _____ | Heavy |
| J. <i>F</i> Instrument | _____ | A chord tone that is held into a chord to which it does not belong |
| K. Pentatonic Scale | _____ | A melody supported by accompanying harmonies |
| L. Subito | _____ | Music with two or more independent melodies |
| M. Suite | _____ | Enough |
| N. Concerto | _____ | A piece that includes the systematic imitation of a principal theme with counterpoint |
| O. Con | _____ | A composition for solo instrument and orchestra |